

2.0 site analysis

2.1 Photographic Area Study

The Town hall on Cambridge St is Heritage listed.



Abbotsford St has wide verges and a mix of commercial and residential.



Medium density housing on Abbotsford St.



Commercial activation on Cambridge St (looking west). No commercial activation east of this point.



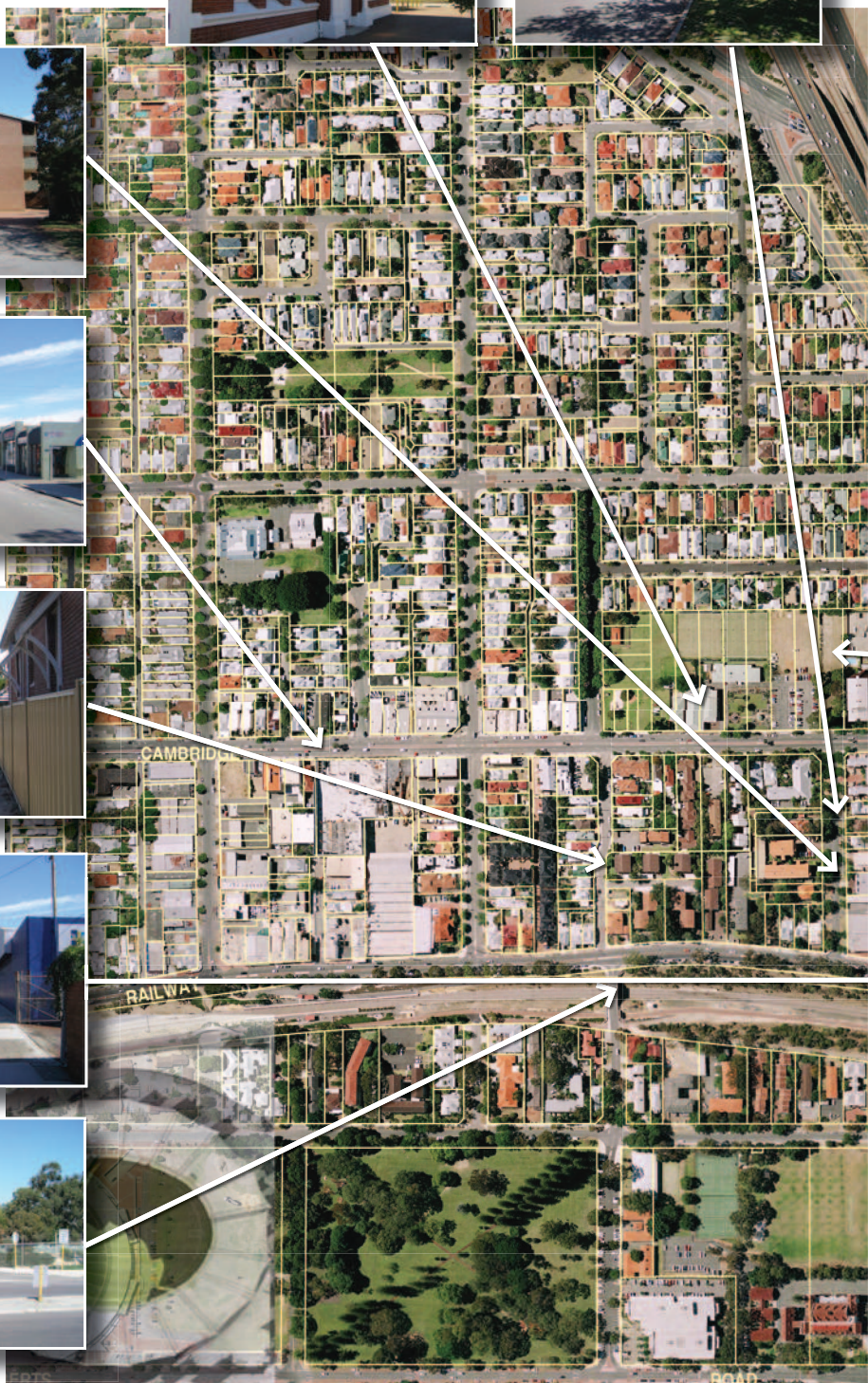
Kerr St heritage houses are very close to street edge and are not suitable for large pedestrian movement.



Pedestrian pathways need a general upgrade along Railway Pde.



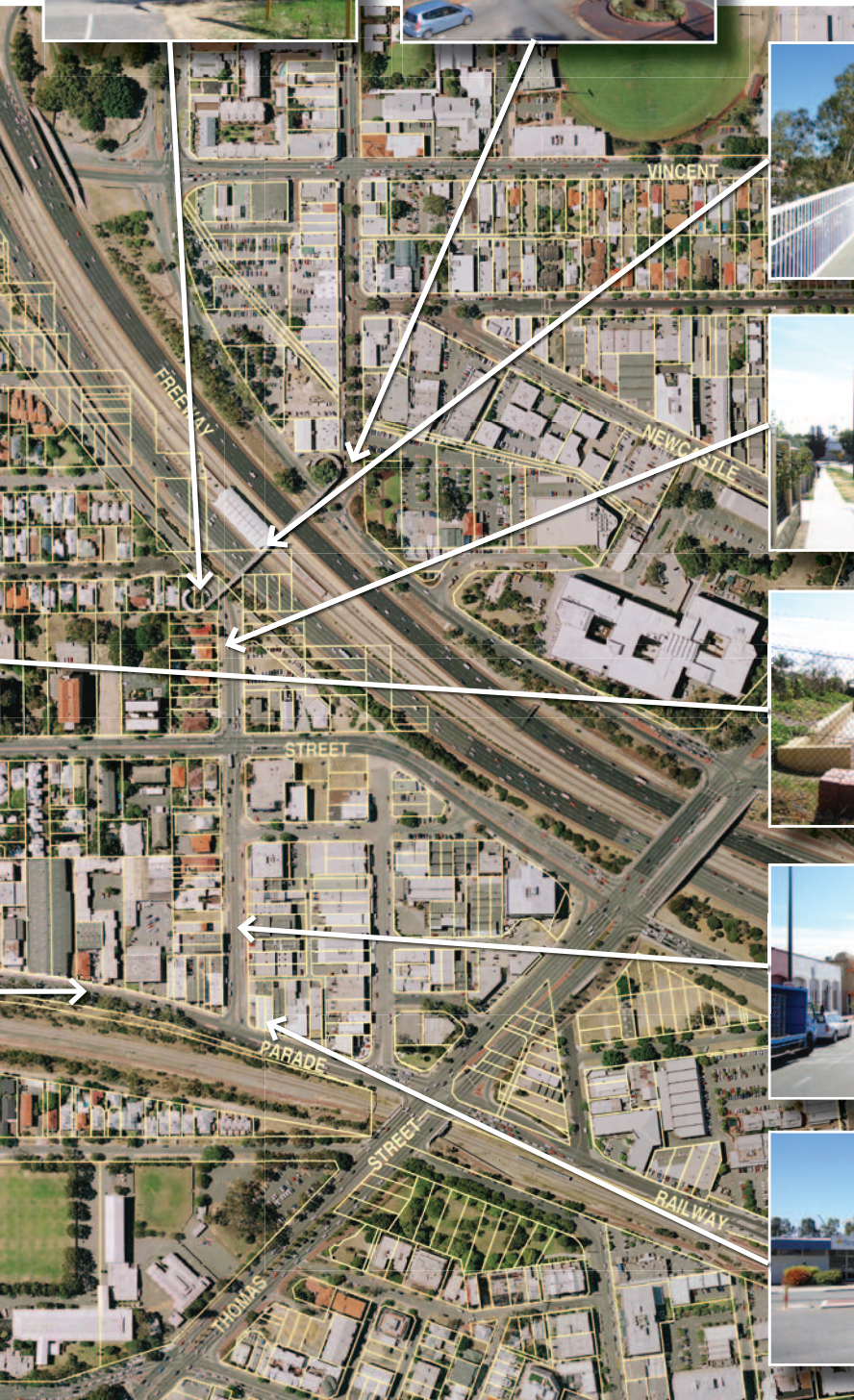
The bridge over the rail line at Hamilton St is not an attractive or safe pedestrian environment.



The current pedestrian ramp has poor connections to Southport St and has security issues.



The current pedestrian overpass does not offer climate protection and has security issues.



The current pedestrian overpass does not offer climate protection and has security issues.



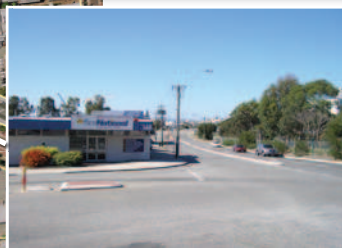
Southport St (North of Cambridge St) lacks a strong visual connection to the overpass entrance. The street acts as a 'freeway on-ramp' and is not pedestrian friendly.



Mid block space, including the community garden, is underutilised and has security issues due to a lack of surveillance from neighbouring properties.



Southport St currently has a mix of light industrial, showrooms and commercial business'. It does not have any residential component and the streetscape is aesthetically poor.



The corner sites have high exposure to a large amount of traffic and are currently under-developed.